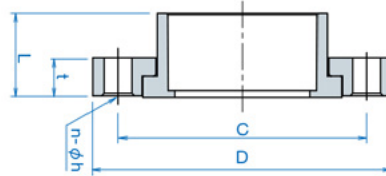


# PVC FITTINGS 19/10

## FLANGE

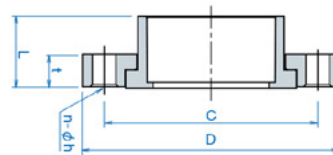
### ONE PIECE FLANGE FLANGE (ANSI) / SOCKET (ASTM)



#### Models

PRODUCT CODE	DESCRIPTIONS	SIZE	DIMENSIONS						PACKING	WEIGHT
			L	T	C	D	n	h		
VF15	FLANGE WITH SOCKET	1/2"	25	11.5	60.5	89	4	15.7	1	0.150
VF20	FLANGE WITH SOCKET	3/4"	29.5	13	70	98.8	4	15.7	1	0.152
VF25	FLANGE WITH SOCKET	1"	32	14.5	79.5	108.3	4	15.7	1	0.207
VF32	FLANGE WITH SOCKET	1-1/4"	38.5	17.6	89	118.8	4	15.7	1	0.276
VF40	FLANGE WITH SOCKET	1-1/2"	40.5	19	98.5	127.5	4	15.7	1	0.360
VF50	FLANGE WITH SOCKET	2"	46.6	19.5	120.5	152	4	19.1	1	0.512
VF65	FLANGE WITH SOCKET	2-1/2"	51	22.5	139.5	177	4	19.1	1	0.799
VF80	FLANGE WITH SOCKET	3"	55	27.1	152.5	192.8	4	19.1	1	0.983
VF1H	FLANGE WITH SOCKET	4"	64	29.3	190.5	229.7	8	19.1	1	1.497
VF1Q	FLANGE WITH SOCKET	5"	82	28	216	254	8	22.4	1	1.841
VF1F	FLANGE WITH SOCKET	6"	84.5	25.5	241.5	279	8	22.4	1	1.944
VF2H	FLANGE WITH SOCKET	8"	116	29	298.5	343	8	22.4	1	3.798

### ONE PIECE FLANGE FLANGE (JIS) / SOCKET (ASTM)



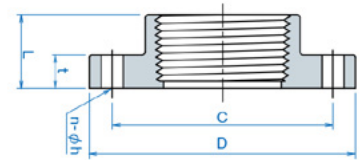
#### Models

PRODUCT CODE	DESCRIPTIONS	SIZE	DIMENSIONS						PACKING	WEIGHT
			L	T	C	D	n	h		
VF50J	FLANGE WITH SOCKET	2"	45	20	120	155	4	19	1	0.528
VF65J	FLANGE WITH SOCKET	2-1/2"	51	22	140	175	4	19	1	0.720
VF80J	FLANGE WITH SOCKET	3"	55	22	150	185	4	19	1	0.752
VF1HJ	FLANGE WITH SOCKET	4"	64	22	175	210	8	19	1	0.984
VF1QJ	FLANGE WITH SOCKET	5"	82	24	210	250	8	23	1	1.508
VF1FJ	FLANGE WITH SOCKET	6"	84.5	25.5	240	280	8	23	1	1.956
VF2HJ	FLANGE WITH SOCKET	8"	116	28	290	330	12	23	1	3.358

# PVC FITTINGS 19/10

## FLANGE

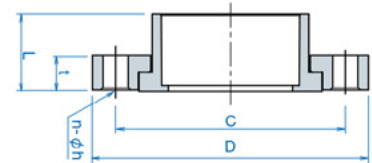
### ONE PIECE FLANGE FLANGE (ANSI) / THREADED



#### Models

PRODUCT CODE	DESCRIPTIONS	SIZE	DIMENSIONS						PKG	WEIGHT
			L	t	C	D	n	h		
VF15T	FLANGE -FEMALE THREADED	1/2"	25	11.5	60.5	89	4	16	1	0.105
VF20T	FLANGE -FEMALE THREADED	3/4"	29.5	13	70	98.8	4	16	1	0.134
VF25T	FLANGE -FEMALE THREADED	1"	32	14.5	79.5	108.3	4	16	1	0.212
VF32T	FLANGE -FEMALE THREADED	1-1/4"	38.5	18.3	89	118.5	4	16	1	0.268
VF40T	FLANGE -FEMALE THREADED	1-1/2"	40.5	17.5	98.5	127.5	4	16	1	0.346
VF50T	FLANGE -FEMALE THREADED	2"	45	19.5	120.5	152	4	19	1	0.512
VF65T	FLANGE -FEMALE THREADED	2-1/2"	51	22.5	139.5	177	4	19	1	0.799
VF80T	FLANGE -FEMALE THREADED	3"	55	24	152.5	191	4	20	1	0.983
VF1HT	FLANGE -FEMALE THREADED	4"	64	24	190.5	229.7	8	19	1	1.497

### VAN STONE FLANGE FLANGE (ANSI) / SOCKET (ASTM)



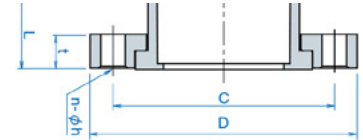
#### Models

PRODUCT CODE	DESCRIPTIONS	SIZE	DIMENSIONS						PKG	WEIGHT
			L	t	C	D	n	h		
VVF15	VAN STONE FLANGE ANSI/ASTM	1/2"	25	11.2	60.5	88.9	4	15.9	1	0.100
VVF20	VAN STONE FLANGE ANSI/ASTM	3/4"	29.5	12.7	70	98.6	4	15.9	1	0.160
VVF25	VAN STONE FLANGE ANSI/ASTM	1"	32	14.5	79.5	108	4	15.9	1	0.180
VVF32	VAN STONE FLANGE ANSI/ASTM	1-1/4"	38.5	15.7	89	117.4	4	15.9	1	0.240
VVF40	VAN STONE FLANGE ANSI/ASTM	1-1/2"	40.5	17.5	98.5	127	4	15.9	1	0.290
VVF50	VAN STONE FLANGE ANSI/ASTM	2"	43	20	120.5	152	4	19.1	1	0.429
VVF65	VAN STONE FLANGE ANSI/ASTM	2-1/2"	51	24.5	139.5	178	4	19.1	1	0.655
VVF80	VAN STONE FLANGE ANSI/ASTM	3"	55	27	152.5	191	4	19.1	1	0.807
VVF1H	VAN STONE FLANGE ANSI/ASTM	4"	64	28	190.5	229	8	19.1	1	1.173
VVF1Q	VAN STONE FLANGE ANSI/ASTM	5"	82	28	216	254	8	22.4	1	1.565
VVF1F	VAN STONE FLANGE ANSI/ASTM	6"	85	32	241.5	283.2	8	22.4	1	2.002
VVF2H	VAN STONE FLANGE ANSI/ASTM	8"	120.5	36	298.5	343	8	22.4	1	3.157
VVF2F	VAN STONE FLANGE ANSI/ASTM	10"	150	42	362	406	12	25.4	1	5.415
VVF3H	VAN STONE FLANGE ANSI/ASTM	12"	190	42	432	483	12	25.4	1	9.680
VVF3F	VAN STONE FLANGE ANSI/ASTM	14"	203	51	476	533	12	28.4	1	12.329
VVF4H	VAN STONE FLANGE ANSI/ASTM	16"	225	60	540	597	16	28.4	1	17.460
VVF4F	VAN STONE FLANGE ANSI/ASTM	18"	248	60	578	635	16	31.8	1	21.599

# PVC FITTINGS 19/10

## FLANGE

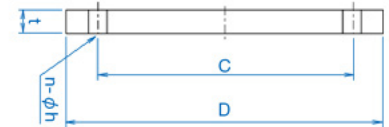
### VAN STONE FLANGE FLANGE (ANSI) / SOCKET (ASTM)



#### Models

PRODUCT CODE	DESCRIPTIONS	SIZE	DIMENSIONS						PACKING	WEIGHT
			L	t	C	D	n	h		
VVF50J	VAN STONE FLANGE	2"	43	20	120	153	4	20	1	0.446
VVF65J	VAN STONE FLANGE	2-1/2"	51	24.5	140	178.3	4	20	1	0.683
VVF80J	VAN STONE FLANGE	3"	55	27	150	185	8	19	1	0.840
VVF1HJ	VAN STONE FLANGE	4"	64	28	175	210	8	19	1	0.990
VVF1QJ	VAN STONE FLANGE	5"	82	28	210	250	8	23	1	1.480
VVF1FJ	VAN STONE FLANGE	6"	85	32	240	283.4	8	23	1	2.124
VVF2HJ	VAN STONE FLANGE	8"	120.5	36	290	330	12	23	1	3.927
VVF2FJ	VAN STONE FLANGE	10"	150.0	42	355	400	12	25	1	5.686

### BLIND FLANGE FLANGE (ANSI)



#### Models

PRODUCT CODE	DESCRIPTIONS	SIZE	DIMENSIONS					PACKING	WEIGHT
			t	C	D	n	h		
VBF15	BLIND FLANGE	1/2"	12	60.5	89	4	16	1	0.117
VBF20	BLIND FLANGE	3/4"	13	70	98	4	16	1	0.160
VBF25	BLIND FLANGE	1"	15	79.5	108	4	16	1	0.190
VBF32	BLIND FLANGE	1-1/4"	16	89	117	4	16	1	0.238
VBF40	BLIND FLANGE	1-1/2"	18	98.5	127	4	16	1	0.329
VBF50	BLIND FLANGE	2"	18	120.5	152	4	19	1	0.518
VBF65	BLIND FLANGE	2-1/2"	22	139.5	178	4	19	1	0.843
VBF80	BLIND FLANGE	3"	24	152.5	191	4	19	1	1.006
VBF1H	BLIND FLANGE	4"	24	190.5	229	8	19	1	1.627
VBF1Q	BLIND FLANGE	5"	26	216	254	8	22	1	1.950
VBF1F	BLIND FLANGE	6"	26	241.5	283	8	22	1	2.489
VBF2H	BLIND FLANGE	8"	28	298.5	343	8	22	1	3.809
VBF2F	BLIND FLANGE	10"	28	362	406	12	25	1	
VBF3H	BLIND FLANGE	12"	28	432	483	12	25	1	
VBF3F	BLIND FLANGE	14"	28	476	535	12	29	1	
VBF4H	BLIND FLANGE	16"	45	540	595	16	29	1	



Your global partner since 1974. Trusted for superior quality and exceptional innovations.



## Head Office

### AQUA S.p.A

42018 San Martino in Rio, Reggio Emilia  
Italy - Via Crotti, 1  
P : +39 0522 695805/85 - F : +39 0522 646160  
aqua@aqua.it | www.aqua.it

### AQUA S.p.A - POOL DIVISION

46043 Castiglione d. Stiviere, Mantova - Italy  
P : +39 0376 671973 - F : +39 0376 940139  
infopools@aqua.it | www.aqua.it



## Branches

### AQUA WATER SYSTEMS LTD

Unit 135 Oak Drive Hartlebury Trading Estate,  
Worcestershire, DY10 4JB  
P : +44 (0)1299 251050, F : +44 (0)1299 253704  
sales@askaqua.co.uk | www.askaqua.co.uk

### AQUA FILTRACION S.A.

Pol. Ind. Castellbisbal Sud 08755  
Castellbisbal, Barcelona  
P : +34 (0)93 7711855, F : +34 (0)93 7711772  
info@aqua.es | www.aqua.es

### AQUA SU ARITIMI SAN. VE MUH. TIC. LTD. STI.

Ferhatpasa Mahallesi Maresal Fevzi Cakmak  
Cad. No:45 Pk.34888 Atasehir / Istanbul - Turkey  
P : +90 216 661 60 60, F : +90 216 661 68 50  
info@aqua.com.tr | www.aqua.com.tr

### AQUA MIDDLE EAST FZC

1J-07/4 and 1J-07/3 - Hamriyah Free Zone  
P.O.Box 42585 Sharjah - United Arab Emirates  
P : +971 6 526 0563, F : +971 6 526 0564  
contact@aqua-me.ae  
www.aqua-me.ae

### AQUA WATER SYSTEMS INDIA PVT LTD

4A/4B/4C-,Puttappa Industrial Estate  
Mahadevapura Post, White Field Road,  
Bangalore 560 048  
P : 0091 80 4152 1313, F : 0091 80 4152 1414  
contact@aquaindia.in | sales@aquaindia.in  
www.aquaindia.in

### AQUA GROUP RUS

Juridical Address:  
107014, Egerskaya str, 1, Moscow, Russia  
Residence Address:  
127081, Chermianskaya str, 3, Moscow, Russia  
P : +7 495 6458078, F : +7 495 969 2413  
mail@aqua-italy.ru | www.aqua-italy.ru  
www.aqua.it

### AQUA GROUP LLC

Office : Regus – Sarayat EL Maadi, Egypt  
Management & Warehouse : Plot no 2-2nd service  
axe, 2nd Industrial Zone, October, Egypt  
P : +20 2 3820 2259 | info@aqua.eg

PVC FITTINGS